

Prisma is a collection formed by two columns and a light beacon for public areas, characterised by its thin prismatic geometry. It easily blends into the landscape, with two optional materials for the column: concrete or steel. The lamp holder has an extruded polycarbonate diffuser that deflects the light flow, giving it an attractive beacon-like effect in addition to its main lighting function.

LED |  | Concrete / Steel | IP65 |  |  10 KV |  4 m/max |  225 kg

 Update 20.04.2021



Origin

Prisma was created as a technological review of a classic model from 1991, originally supplied only in concrete and wood.

Sustainable

Beacon-like effect with a minimum UHF coefficient of 0 %.

Protected

IP65 seal, IP67 LED equipment, IK10 protection against impacts and protection against transient overvoltages.

Material

The *Prisma* columns are supplied in three heights and with a common cross section of 16 x 16 cm: *Prisma 420*, *Prisma 320* and *Prisma 100*, with three material options: grey reinforced concrete with an etched,

water-repellent finish; or zinc plated steel textured Silver coated finish.

Lamp holder with a cast aluminium base and top cover and an extruded clear polycarbonate diffuser with an internal microgroove. LED 700 mA 40 W, 600 mA 34 W or 500 mA 29 W module for *Prisma 420* and *Prisma 320*. LED 350 mA 17 W module for *Prisma 100*.

Installation

All three column models share a stainless steel anchor plate measuring 22 x 22 cm which is anchored below the paving to the concrete foundation with the recommended generic dimensions. Must be unloaded and handled with slings.





The lamp holder has an extruded polycarbonate diffuser with a subtle internal grooved relief that deflects the light flow, giving it an attractive beacon-like effect in addition to its main lighting function.



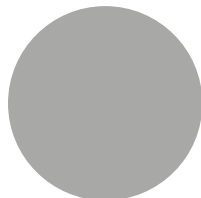
P R I S M A

Escofet®

1. Lighting


Prisma	Prisma column	Prisma beacon
Dimensions	80 x 16 x 16 cm	40 x 16 x 16 cm
Weight	18 kg	10 kg

Finish



Cast aluminium Textured
Silver coated finish

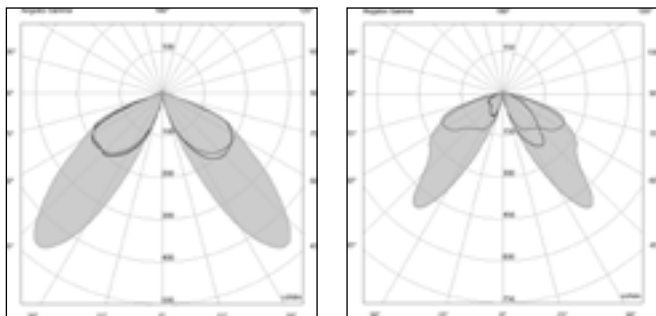
1.1 General features

Material	Cast aluminium	Power supply voltage (V)	176-264
Frequency (HZ)	50-60	Powers (W)	17 / 29 / 34 / 40
No. of LEDs	16	LED intensity (mA)	350 / 500 / 600 / 700
Power factor	0,95 (min)	Colour temperature (°K)	3000 Warm white 4000 Neutral white
Luminous flux (lm)	 Warm white from 2195 to 7135	Luminous efficiency (lm/W)	Warm white from 99 to 149
FHS light pollution	0 %	Equipment class	Clase I
IP protection level	IP65 (lamp) iP67 (optics / components)	IK protection level	IK10
Chromatic reproduction CRI	80	Luminous flux maintenance	100.000h L80B10 (T 25°C)
Service temperature	de -20 a +50°C	Maximum assembly height	4 m
Surface area exposed to the wind (m²)	0,22	Regulation	1 - 10V (DALI optional)
Overvoltage protection	10KV		

1.2. Photometry

Light distribution

According to IESNA classification (Illuminating Engineering Society of North America)



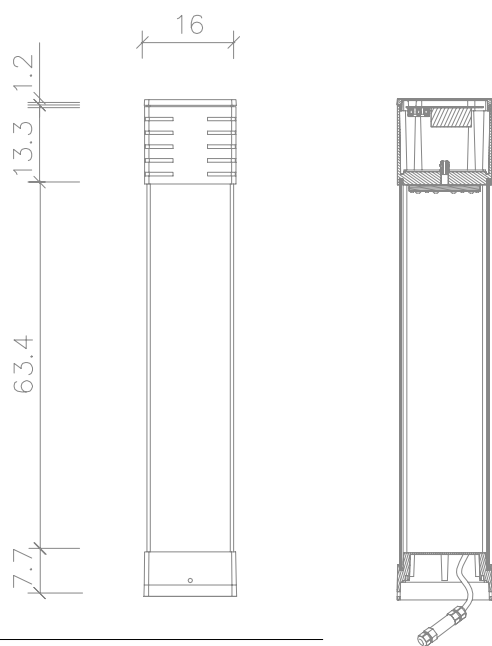
SYM.

ASYM.

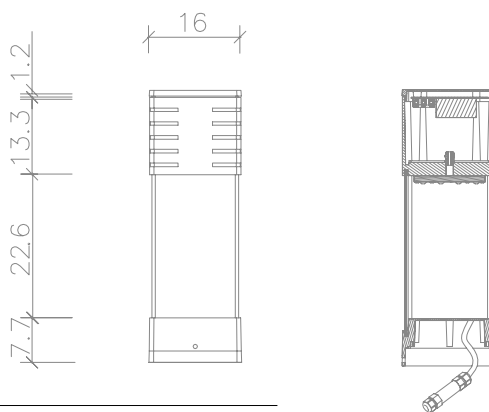
Symmetric

Asymmetrical

1.3. Design and dimensions



Prisma 29W / 34W / 40W



Prisma 17W

1.5 Table of specifications

Model	Optical type	Number of LEDs	Chromatic reproduction index, CRI	Colour temperature ⁹ (K)	LED type	LED intensity (mA)	LED power (W)	Lighting power (W)	Luminous flux (lm)	Luminous efficiency (lm/W)
PRISMA-BALIZA/17W		16	80	3000 4000	Luxeon TX	350	23,5	17	2.404	120,5
PRISMA-FAROLA/29W	500					23,5	29	3.485	120,7	
PRISMA-FAROLA/34W	600					23,4	34	4.086	120,2	
PRISMA-FAROLA/40W	700					23,4	40	4.807	120,1	

⁹Variations optional according to the project

1.6 Lighting regulations

UNE-EN 60598-2-3:2003+Corr:2005+A1:2011
(en conjunción con UNE-EN 60598-1:2015)
UNE-EN 62031:2009+A1:2013+A2:2015
UNE-EN 50102:1996+A1:1999+Corr:2002+A1
CORR:2002
UNE-EN 61000-3-2: 2014
UNE-EN 61000-3-3: 2013
UNE-EN 55015:2013
UNE-EN 61547:2011
UNE-EN 62493:2011

1.7 Advice

The light source of the lightings must be replaced only by the manufacturer or its technical service or by an equivalent qualified person.

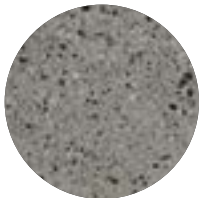
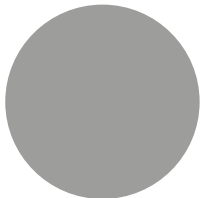
The lighting should be installed such that prolonged staring at the lighting from a distance of closer than 2.8 metres is not expected.

P R I S M A

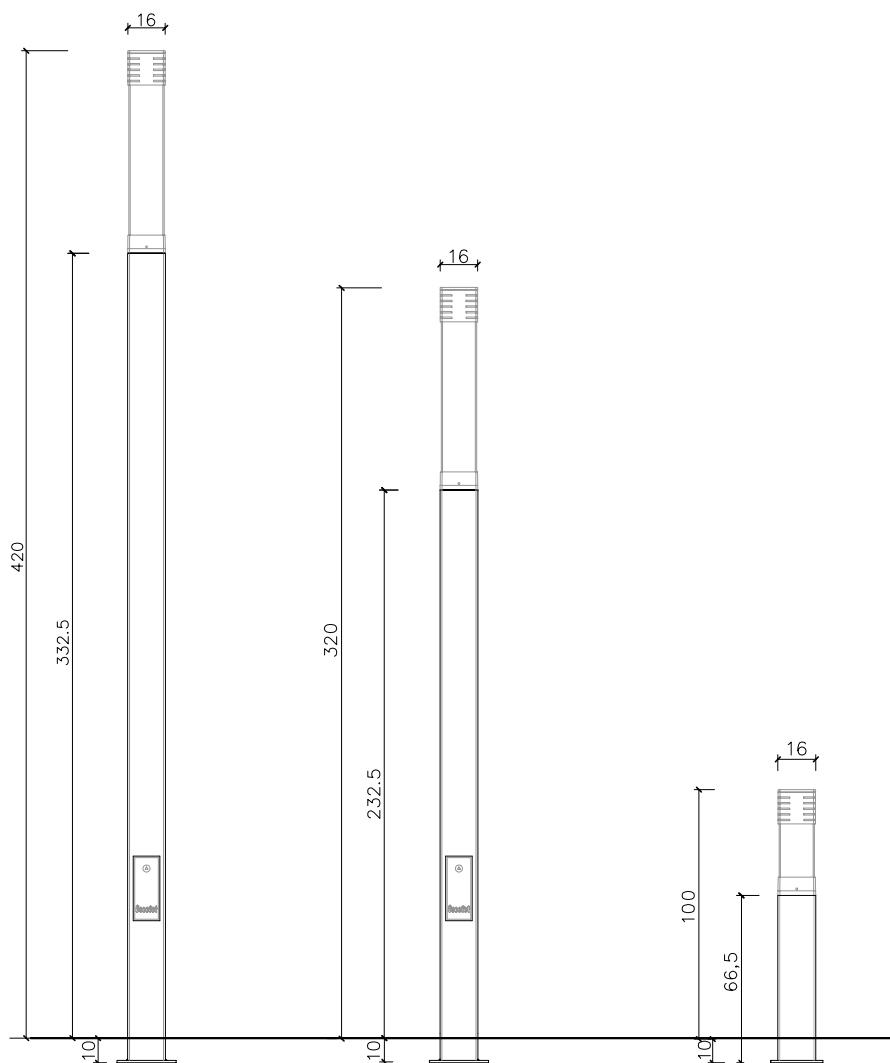


Escofet[®]

2. Post

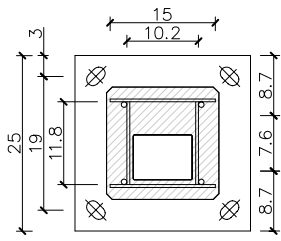
Prisma	Reinforced concrete	Zinc plated steel
Dimensions	332.5 x 16 x 16 cm 232.5 x 16 x 16 cm 66.5 x 16 x 16 cm	332.5 x 16 x 16 cm 232.5 x 16 x 16 cm 66.5 x 16 x 16 cm
Weight	225 / 170 / 50 kg	150 / 100 / 35 kg
Finish	Etched and waterproofed	Textured Silver coated finish. Category of atmospheric corrosivity C5 according to UNE EN ISO 12944-2.
		
	A. Grey concrete	B. Textured Silver steel
Post regulations	UNE-EN 40-5:2002	

2.1 Configurations



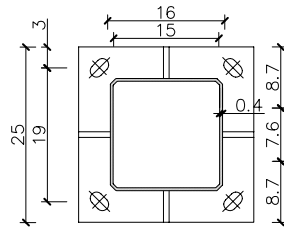
2.3 Foundation

Reinforced concrete



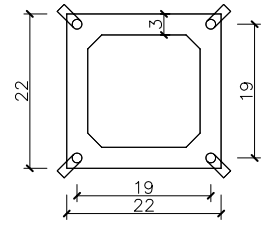
Base section of the post

Zinc plated steel

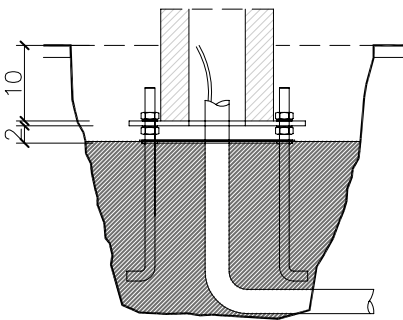


Base section of the post

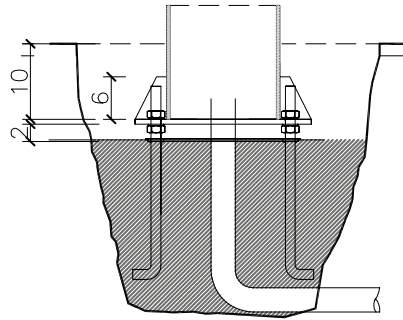
Anchor plate



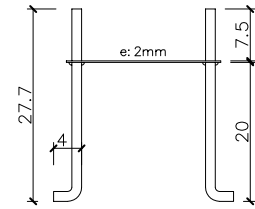
Top



Detail section foundation from the post

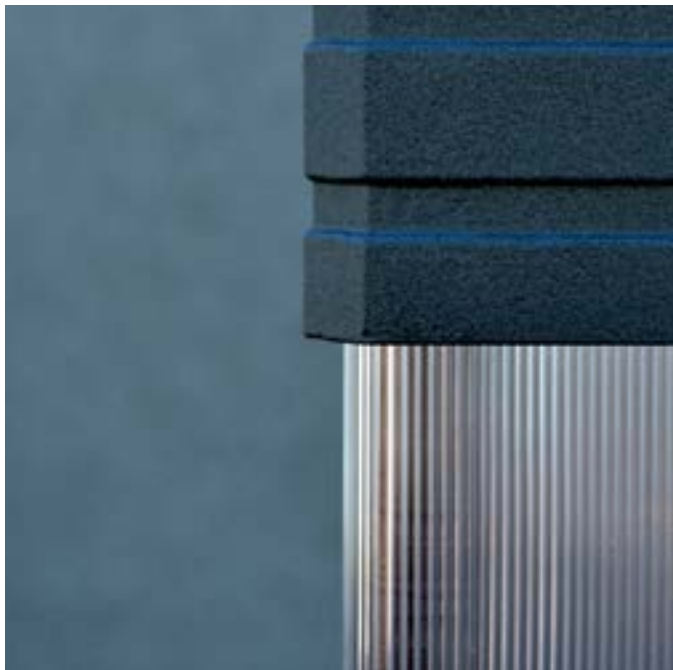


Detail section foundation from the post



Front





Warranty

5 years in concrete elements.

The names, trade marks and industrial models of the products have been deposited in the corresponding registries. The technical information provided by Escofet about its products may be modified without prior notice.

Escofet 1886 S.A
Head office and production

Montserrat, 162
E 08760 Martorell
Barcelona - España
T. 0034 937 737 150
F. 0034 937 737 151

info@escofet.com
www.escofet.com

